



Representative image only. Some models may vary in appearance. Due to continuous product improvement, specifications are subject to change without notice.



For complete warranty details visit www.AspenMfg.com

Product Features and Specifications

APPLICATION VERSATILITY

Front or bottom return air position. Offset hanging brackets attach to unit and wall to allow hanging inside closet. Can be AHRI matched with most brands of air conditioners or heat pumps. ETL listed for use with either R-22 or R-410A when a proper metering device is used.

LOW LEAKAGE CABINET

Less than 2% air leakage from cabinet when tested in accordance with ASHRAE standard 193. Unit must be installed according to Aspen installation instructions. Sturdy, fully insulated galvanized steel cabinet; stick pins ensure 1/2" insulation remains in place. Unit ships with disposable filter.

MODULAR ELECTRIC HEAT KITS

Heat kits available with either circuit breakers or terminal blocks. Available in 3, 5, 8, and 10 KW. Models with electric heat include sequencers and temperature limit switches for safe, efficient operation. Modules are easily installed in the field using molex plugs or can be ordered factory-installed. Controls are accessible from the front for easy service. Electrical connections can be made from the top or left. Disconnect does not protrude through the wall panel. Fan time delay relay standard for increased efficiency.

BLOWER

Direct drive multi-speed blowers circulate air quietly and efficiently. Motor speeds can be easily selected via motor terminals. Swing mounted blowers can be easily removed for service.

ELECTRONIC CIRCUIT BOARD

Electronic circuit board provides 30 secs ON/OFF blower time delay extracting more heat/cool from the coil. Automotive-style pull fuse protection on the circuit board to provide low voltage and transformer protection.

DX COIL

High efficiency rifled copper tubes/enhanced aluminum fins provide maximum heat transfer. All coils immersion tested at 500 psi then nitrogen pressurized and factory sealed for maximum reliability. Liquid-line Schrader allows pre-installation pressure testing. Available with either check style flowrater or TXV metering device. Field-installable TXVs are also available. Galvanized metal drain pan with bottom primary and secondary drain connections or alternate right side primary. All connections 3/4" FPT. Access door allows for coil cleaning.

WARRANTY

Five-year limited parts warranty.

OPTIONS

See Options menu.



AAW SERIES

VERTICAL WALL MOUNT ELECTRIC HEAT AIR HANDLERS

HEATING AND COOLING PERFORMANCE AND ELECTRICAL DATA										
MODEL	HEAT KIT	NOMINAL COOLING (BTUS)	PERFORMANCE DATA				ELECTRICAL DATA			
			HEATING (KW)		HEATING CAPACITY (MBTUH)		MINIMUM CIRCUIT AMPACITY (MCA)		MAX BREAKER OR FUSE SIZE	
			208V	240V	208V	240V	208V	240V	208V	240V
AAW18	F[C,T]S00	18,000	0.0	0.0	0.0	0.0	1.8	1.8	15.0	15.0
	F[C,T]S03		2.3	3.0	7.8	10.2	15.3	17.4	20.0	20.0
	F[C,T]S05		3.7	4.8	12.6	16.4	23.4	26.8	25.0	30.0
	F[C,T]S06		4.6	6.0	13.5	17.9	28.8	33.0	30.0	35.0
	F[C,T]S08		6.0	8.0	20.5	27.3	37.8	43.4	40.0	45.0
	F[C,T]S10		7.2	9.6	24.5	32.8	45.0	51.8	45.0	60.0
AAW19/20	F[C,T]S00	18,000	0.0	0.0	0.0	0.0	1.7	1.7	15.0	15.0
	F[C,T]S03		2.3	3.0	7.8	10.2	15.2	17.3	20.0	20.0
	F[C,T]S05		3.7	4.8	12.6	16.4	23.3	26.7	25.0	30.0
	F[C,T]S06		4.6	6.0	13.5	17.9	28.8	33.0	30.0	35.0
	F[C,T]S08		6.0	8.0	20.5	27.3	37.7	43.4	40.0	45.0
	F[C,T]S10		7.2	9.6	24.5	32.8	45.0	51.7	45.0	60.0
AAW23/24	F[C,T]S00	24,000	0.0	0.0	0.0	0.0	1.8	1.8	15.0	15.0
	F[C,T]S03		2.3	3.0	7.8	10.2	15.3	17.4	20.0	20.0
	F[C,T]S05		3.7	4.8	12.6	16.4	23.4	26.8	25.0	30.0
	F[C,T]S06		4.6	6.0	13.5	17.9	28.8	33.0	30.0	35.0
	F[C,T]S08		6.0	8.0	20.5	27.3	37.8	43.4	40.0	45.0
	F[C,T]S10		7.2	9.6	24.5	32.8	45.0	51.8	45.0	60.0
AAW25/26	F[C,T]S00	24,000	0.0	0.0	0.0	0.0	1.7	1.7	15.0	15.0
	F[C,T]S03		2.3	3.0	7.8	10.2	15.2	17.3	20.0	20.0
	F[C,T]S05		3.7	4.8	12.6	16.4	23.3	26.7	25.0	30.0
	F[C,T]S06		4.6	6.0	13.5	17.9	28.8	33.0	30.0	35.0
	F[C,T]S08		6.0	8.0	20.5	27.3	37.7	43.4	40.0	45.0
	F[C,T]S10		7.2	9.6	24.5	32.8	45.0	51.7	45.0	60.0
AAW30/31	F[C,T]S00	30,000	0.0	0.0	0.0	0.0	3.3	3.3	15.0	15.0
	F[C,T]S03		2.3	3.0	7.8	10.2	16.8	18.9	20.0	20.0
	F[C,T]S05		3.7	4.8	12.6	16.4	24.9	28.3	25.0	30.0
	F[C,T]S06		4.6	6.0	13.5	17.9	30.3	34.5	35.0	35.0
	F[C,T]S08		6.0	8.0	20.5	27.3	39.3	44.9	40.0	45.0
	F[C,T]S10		7.2	9.6	24.5	32.8	46.5	53.3	50.0	60.0
AAW36/37	F[C,T]S00	36,000	0.0	0.0	0.0	0.0	3.3	3.3	15.0	15.0
	F[C,T]S03		2.3	3.0	7.8	10.2	16.8	18.9	20.0	20.0
	F[C,T]S05		3.7	4.8	12.6	16.4	24.9	28.3	25.0	30.0
	F[C,T]S06		4.6	6.0	13.5	17.9	30.3	34.5	35.0	35.0
	F[C,T]S08		6.0	8.0	20.5	27.3	39.3	44.9	40.0	45.0
	F[C,T]S10		7.2	9.6	24.5	32.8	46.5	53.3	50.0	60.0

BLOWER DATA									
MODEL	MOTOR SPEED	MOTOR HP	MOTOR AMPS	MOTOR VOLTAGE	CF M V. EXTERNAL STATIC * †				
					0.10	0.20	0.30	0.40	0.50
AAW18/23/24	LOW	1/5	1.40	240	834	795	746	687	620
	HIGH				930	888	823	749	680
AAW19/25	LOW	1/5	1.35	240	740	710	685	650	615
	HIGH				930	880	830	770	710
AAW20/26	LOW	1/5	1.35	240	727	696	674	640	604
	HIGH				909	866	814	757	696
AAW30/36	LOW	1/3	2.6	240	1123	1094	1062	1034	1000
	HIGH				1396	1358	1313	1261	1200
AAW31/37	LOW	1/3	2.6	240	1154	1100	1042	982	901
	HIGH				1256	1193	1113	1057	982

* Wet coil with filter, † - For 208 V multiply by 0.90

AIR HANDLER CHASSIS NOMENCLATURE			
AAW	18	F	-001
AAW = 240V PSC Motor Vertical Wall Mount	Nominal tonnage (MBTUH)	Metering Device 4 = non-bleed A/C or H/P R410 TXV B = 20% bleed A/C or H/P R22 TXV F = Flo-rater G = R410a Flo-rater X = non-bleed A/C or H/P R22 TXV	Option Code

ELECTRIC HEAT KIT NOMENCLATURE			
F	C	S	05
Wall Mount Electric Heat	Interruption C = Circuit Breaker T = Terminal Block	S = 18 - 37	Heat strip 03 = 3 KW 05 = 5 KW 08 = 8 KW 10 = 10KW

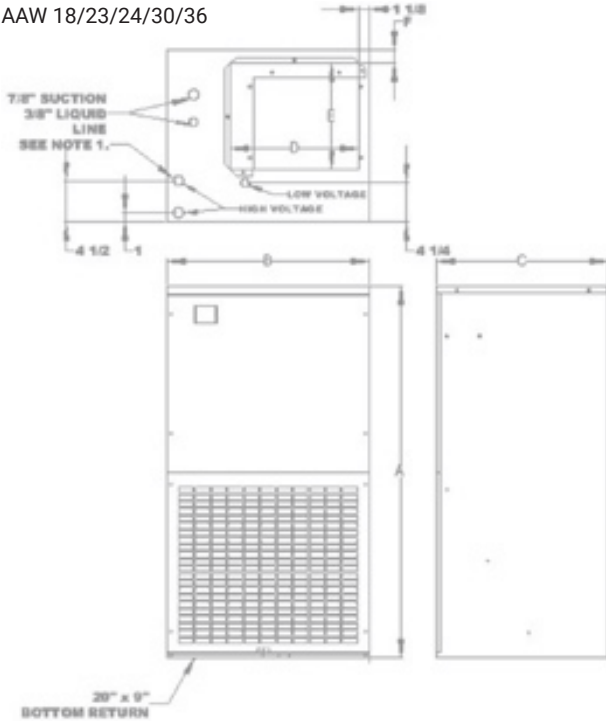
AAW SERIES

VERTICAL WALL MOUNTELECTRIC HEAT AIR HANDLERS

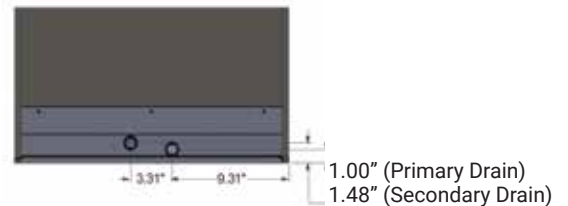
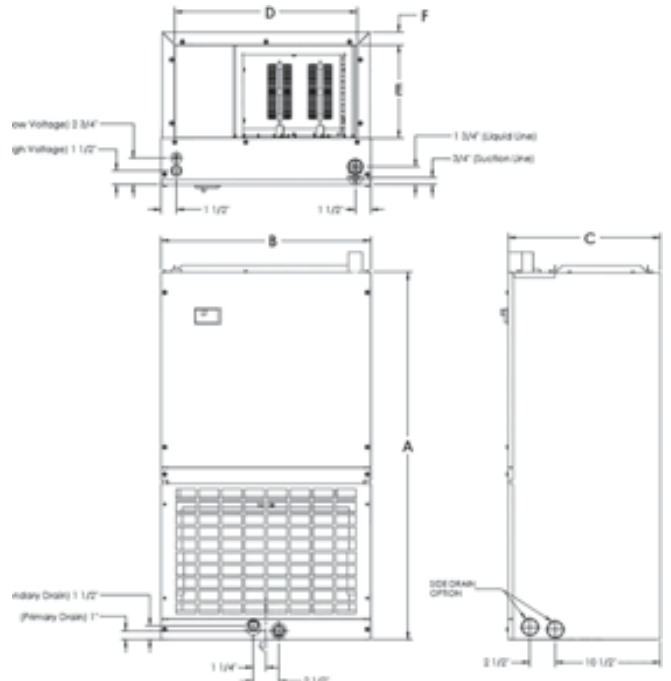
DIMENSIONS AND SPECIFICATIONS (In. [mm]) (Fig 1)										
MODEL	A	B	C	D	E	F	FILTER SIZE	PISTON SIZE	SHIP WEIGHT (LBS)	SKID QTY
AAW18*	37 1/2 [953]	22 [559]	18 3/4 [476]	14 [356]	10 [254]	3 1/4 [83]	20X20	0.049	90	4
AAW19*	36 [915]	20 1/2 [521]	15 [381]	18 [457]	9 1/4 [235]	1 1/4 [32]	14X18	0.049	80	4
AAW20*	36 [915]	20 1/2 [521]	15 [381]	18 [457]	9 1/4 [235]	1 1/4 [32]	14X18	0.049	80	4
AAW23*	37 1/2 [953]	22 [559]	18 3/4 [476]	14 [356]	10 [254]	3 1/4 [83]	20X20	0.049	90	4
AAW24*	37 1/2 [953]	22 [559]	18 3/4 [476]	14 [356]	10 [254]	3 1/4 [83]	20X20	0.049	90	4
AAW25*	36 [915]	20 1/2 [521]	15 [381]	18 [457]	9 1/4 [235]	1 1/4 [32]	14X18	0.055	80	4
AAW26*	36 [915]	20 1/2 [521]	15 [381]	18 [457]	9 1/4 [235]	1 1/4 [32]	14X18	0.055	80	4
AAW30*	40.5 [1029]	22 [559]	18 3/4 [476]	14 [356]	11 1/2 [292]	1 3/8 [35]	20X20	0.059	102	4
AAW31*	36 [915]	24 [610]	21 [533]	21 1/2 [546]	12 [305]	1 1/4 [32]	20X20	0.059	90	4
AAW36*	40.5 [1029]	22 [559]	18 3/4 [476]	14 [356]	11 1/2 [292]	1 3/8 [35]	20X20	0.068	102	4
AAW37*	36 [915]	24 [610]	21 [533]	21 1/2 [546]	12 [305]	1 1/4 [32]	20X20	0.068	90	4

Fig. 1

AAW 18/23/24/30/36

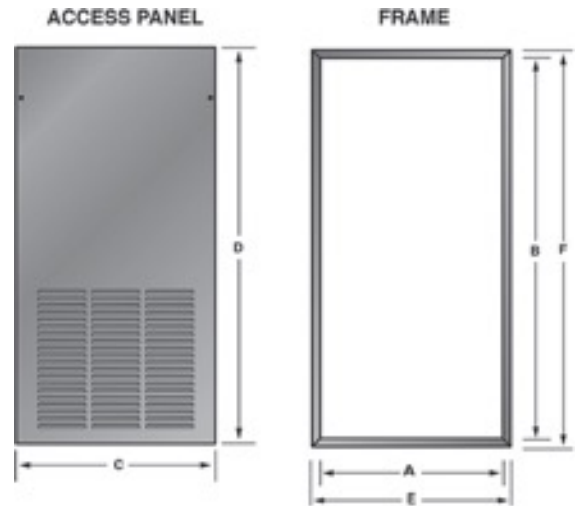


AAW 19/20/25/26/31/37



INSTALLATION CLEARANCES		
	OPERATION	SERVICE
TOP	0"	0"
FRONT	0"	30"
SIDES	0"	0"
REAR	0"	0"

Fig. 2



DIMENSIONS AND SPECIFICATIONS (Fig 2)									
PANEL MODEL	FOR USE WITH	FINISH	OPENING SIZE		PANEL DIMENSION		FRAME DIMENSION		# OF PANELS
			A"	B"	C"	D"	E"	F"	
WAD-7(S/L)	AAW 18/23/24	Embossed	22 1/4	39-1/2	24-1/4	41-1/2	24-1/8	41-3/8	1
WAD-8(S/L)	AAW 30/36	Embossed	22 1/4	42-1/2	24-1/4	44-1/2	24-1/8	44-3/8	1
WAD-18(S/L)	AAW 18/23/24	Smooth	22 1/4	39 1/2	24-1/4	41-1/2	24-1/8	41-3/8	1
WAD-19(S/L)	AAW 30/36	Smooth	22 1/4	42-1/2	24-1/4	44-1/2	24-1/8	44-3/8	1
WAD-20(S/L)	AAW 19/20/25/26	Embossed	20 3/4	38	22-3/4	40	22 5/8	39-7/8	1
WAD-21(S/L)	AAW 31/37	Embossed	24 1/4	38	26-1/4	40	26-1/8	39-7/8	1
WAD-22(S/L)	AAW 19/20/25/26	Smooth	20 3/4	38	22-3/4	40	22-5/8	39-7/8	1
WAD-23(S/L)	AAW 31/37	Smooth	24 1/4	38	26-1/4	40	26-1/8	39-7/8	1

Ask for Aspen. North America's Largest Independent Coil and Air Handler Manufacturer.

Aspen Manufacturing is one of the largest independent evaporator coil and air handler manufacturers for the heating, ventilation, and air conditioning (HVAC) industry. As a recognized leader in product quality and indoor comfort, Aspen has continued to deliver on its promise of world-class performance since 1975. All products are designed, engineered, and manufactured in the United States with a commitment to utilizing a US supply chain where possible. The company's product offerings include high-quality residential and light commercial evaporator coils, blowers, and air handling units for multi-family, single-family residential, and manufactured homes.



Aspen utilizes state-of-the-art fabrication, assembly equipment, and stringent quality processes to maintain the highest possible quality in its products. The company adheres to its award-winning lean manufacturing system designed to eliminate inefficient procedures, policies, and production practices. Incorporating ISO techniques, the company's quality management system (QMS) ensures product delivery that meets the highest industry standards. Beyond technical compliance, Aspen can quickly adapt to changing market demands thanks to the company's nimble ability to react to changes in requirements and leadership's commitment to enabling a customer-centered company philosophy.



Revised 1/24.

In keeping with its commitment to continuous improvement, Aspen Manufacturing reserves the right to make changes without notice and incurring obligation.

©2024



373 Atascosita Road, Humble, TX 77396 | P 800-423-9007
www.AspenMfg.com