

FEATURES AND SPECIFICATIONS:

APPLICATION VERSATILITY

Bult in mounting tabs for ceiling or furrdown mounting. Louvered ceiling access pane has separate frame that attaches to ceiling joists. Solid access panel available for use with end return installations. Can be AHRi matched with most brands of air conditioners or heat pumps. ETL listed for use with either R22 or R410a when a proper metering device is used.

MOTOR

Constant torque EM speeds and torques are controlled by software embedded in the motor to maintain constant torque. Motors are pre-pro-grammed at the factory.

CABINET

Sturdy, fully insulated galvanized steel cabinet with painted front panels.

MODULAR ELECTRIC HEAT KITS

Heat kits available with either circuit breakers or terminal blocks. Available in 3, 5, 8, & 10 KW. Models with electric heat include sequencers and temperature limit switches for safe, efficient operation. Modules are easily installed in the field using Molex plugs or can be ordered factory-installed. Controls are accessible from the front for easy service. Electrical connections can be made from the top or left. Disconnect does not protrude through the wall panel. Fan time delay relay standard for increased efficiency.

BLOWER

Direct drive multispeed blowers circulate air quietly and efficiently. Motor speeds can be easily selected via motor terminals. Swing mounted blowers can be easily removed for service.

ELECTRONIC CIRCUIT BOARD

Electronic circuit, board provides 30 secs ON/OFF blower time delay extracting more heat/cool from the coil.

ELECTRONIC CIRCUIT BOARD

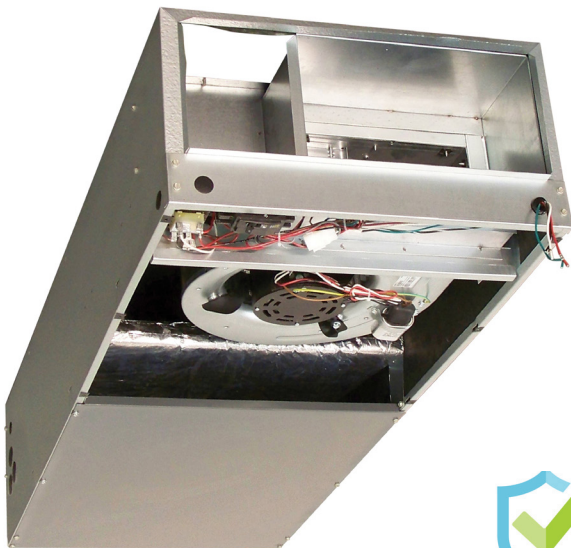
High efficiency niled copper tubes/ enhanced aluminum fins provide maximum heat transfer. All coils immersion tested at 500 psi, then nitrogen pressurized and factory sealed for maximum reliability. Liquid-line Schrader allows pre-installation pressure testing. Available with either check stye flowrater or TXV metering device. Field installable TXVs are also available. Galvanized metal drain pan with bottom primary and secondary drain connections or alternate right side primary. All connections 3/4" FPT. Access door allows for coil cleaning.

WARRANTY

Hassle-free five-year limited parts warranty.

OPTIONS

See options menu.



Unit shown with service panels removed. Representative drawing only. Some models may vary in appearance.

ASK FOR ASPEN

Revised 7/2024

In keeping with its commitment to continuous improvement. Aspen Manufacturing reserves the right to make changes without notice and incurring obligation.

HEATING AND COOLING PERFORMANCE AND ELECTRICAL DATA

MODEL	ELECTRIC HEAT KIT MODEL	NOMINAL COOLING (BTU)	PERFORMANCE DATA				ELECTRICAL DATA			
			HEATING		HEATING CAPACITY		MINIMUM CIRCUIT AMPACITY (MCA)		MAX BREAKER OR FUSE SIZE	
			(KW)		(MBTUH)					
			208V	240V	208V	240V	208V	240V	208V	240V
AEC18	G(C,T)S00	18,000	0	0	0	0	3.5	3.5	15	15
	G(C,T)S03		2.3	3	7.8	10.2	17.0	19.1	20	20
	G(C,T)S05		3.8	5	13.0	17.1	25.1	28.5	30	30
	G(C,T)S08		6.0	8	20.8	27.3	39.6	45.2	45	50
	G(C,T)S10		7.5	10	24.9	32.8	46.8	53.5	50	60
AEC24	G(C,T)00	24,000	0	0	0	0	3.5	3.5	15	15
	G(C,T)03		2.3	3	7.8	10.2	17.0	19.1	20	20
	G(C,T)05		3.8	5	13.0	17.1	25.1	28.5	30	30
	G(C,T)06		6.0	8	20.8	27.3	39.6	45.2	45	50
	G(C,T)08		7.5	10	24.9	32.8	46.8	53.5	50	60
AEC30	G(C,T)S00	30,000	0	0	0	0	5.1	5.1	15	15
	G(C,T)S03		2.3	3	7.8	10.2	18.6	20.8	20	25
	G(C,T)S05		3.8	5	13.0	17.1	26.8	30.1	30	35
	G(C,T)S08		6.0	8	20.8	27.3	41.2	46.8	45	50
	G(C,T)S10		7.5	10	24.9	32.8	48.4	55.1	50	60
AEC36 AEC37	G(C,T)00	36,000	0	0	0	0	5.1	5.1	15	15
	G(C,T)03		2.3	3	7.8	10.2	18.6	20.8	20	25
	G(C,T)05		3.8	5	13.0	17.1	26.8	30.1	30	35
	G(C,T)06		6.0	8	20.8	27.3	41.2	46.8	45	50
	G(C,T)08		7.5	10	24.9	32.8	48.4	55.1	50	60

BLOWER DATA

MODEL	SPEED TAP	MOTOR			CFM V EXTERNAL STATIC									
		HP	AMPS	VOLTAGE	0.1	0.2	0.3	0.4	0.5	0.6	0.7	0.8	0.9	1.0
AEC18 AEC24	TAP 1	3/4	5.4	240	710	650	590	530	470	460	410	340	-	-
	TAP 2				770	720	670	630	570	510	450	420	370	340
	TAP 3				900	850	810	800	705	660	610	560	510	480
	TAP 4				1130	1100	1060	1020	980	940	900	850	810	760
	TAP 5				1310	1280	1240	1200	1165	1130	1080	1050	1010	970
AEC30 AEC36 AEC37	TAP 1	1	7.0	240	1130	1100	1060	1020	965	900	860	810	750	690
	TAP 2				1340	1300	1265	1230	1200	1155	1115	1050	1020	975
	TAP 3				1490	1450	1420	1400	1365	1330	1300	1270	1235	1170
	TAP 4				1670	1640	1610	1585	1550	1520	1500	1460	1430	1400
	TAP 5				1850	1825	1800	1770	1750	1720	1690	1670	1640	1620

ELECTRIC HEAT KIT NOMENCLATURE

G	C	S	03
Ceiling Mount Electric Heat	INTERRUPTION C = CIRCUIT BREAKER T = TERMINAL BLOCK	S = 18-36	HEAT STRIP 03 = 3 KW 05 = 5 KW 08 = 8 KW 10 = 10 KW

Revised 7/2024

In keeping with its commitment to continuous improvement, Aspen Manufacturing reserves the right to make changes without notice and incurring obligation.

AIR HANDLER CHASSIS NOMENCLATURE

AEC	18	F	-001
AEC = 240V Constant torque ECM Ceiling Mount	NOMINAL TONNAGE (MBTUH)	Metering device 4 = non-bleed A/C or H/P R410 TXV B = 20% bleed A/C or H/P R22 TXV F = R22 Flo-rater G = R410a Flo-rater X = non-bleed A/C or H/P R22 TXV	Option Code

AEC DIMENSIONS (Fig.1)

Model	HEIGHT A	WIDTH B	DEPTH C	D	E	FILTER SIZE	SHIPPING WEIGHT	SKID QTY
AEC18*	57-1/2 [146]	22-1/2 [57]	12 [20]	20-3/8 [52]	8 [20]	20X20	91	6
AEC24*							100	
AEC30*								
AEC36* AEC37*								

INSTALLATION CLEARANCES

G	OPERATION	SERVICE
TOP	0"	0"
FRONT	0"	30"
SIDES	0"	0"
REAR	0"	0"

Fig. 1

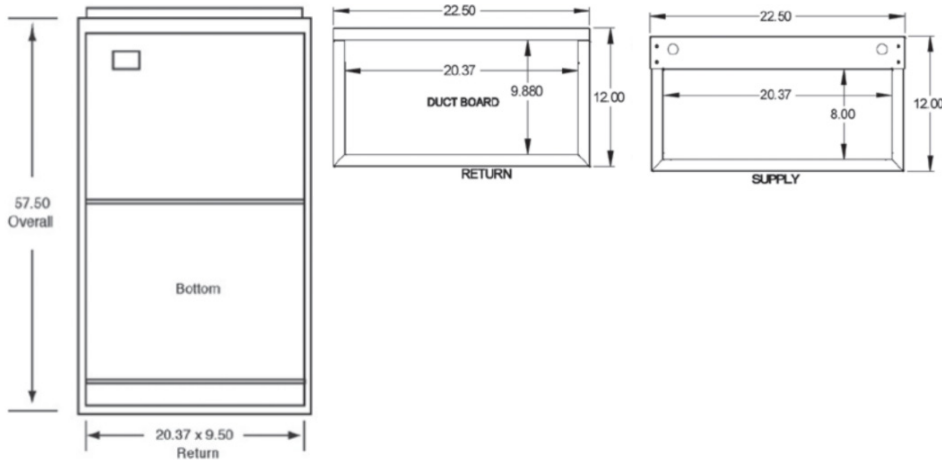
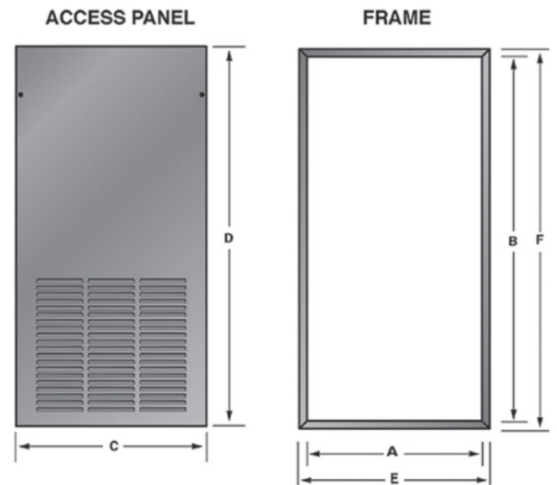


Fig. 2



AEC DIMENSIONS (Fig. 2)

Panel Model	FOR USE WITH	OPENING SIZE		PANEL DIMENSION		FRAME DIMENSIONS		# OF PANELS
		A	B	C	D	E	F	
CAD-4(S/L)	AEC	23-3/4	58	24-3/4	60	24-5/8	59-7/8	2

ASK FOR ASPEN

Revised 7/2024

In keeping with its commitment to continuous improvement, Aspen Manufacturing reserves the right to make changes without notice and incurring obligation.